



jordan fishwick

MANCHESTER
193 Hart Road



**193 Hart Road,
Manchester, M14 7BA**

£1,300 Per Calendar Month



The Property

*** AVAILABLE DECEMBER *** A most appealing, large three double bedroom apartment occupying the full top floor within this popular, attractive property that enjoys an ideal location just off Wilbraham Road. Suitable for families or working professional sharers, offering easy access to motorways & Manchester City Centre. The living space is well presented with a good size entrance hall and ample built in storage cupboards. Light and airy lounge, separate kitchen with white goods, three double bedrooms with fitted wardrobes and bathroom with white suite and over bath shower. The property has just undergone full redecoration and new flooring throughout. Externally, there are well tended communal grounds and private residents parking. Available unfurnished with built in wardrobes in the bedrooms. No deposit option available. To arrange a viewing, please contact our Didsbury office

View our Virtual Tour Here - <https://youtu.be/E5crel8GOqc>

EPC - C // Council Tax Band C

Directions

M14 7BA



- Available December
- Three Double Bedrooms
- Top Floor Apartment
- Families or Sharers
- Unfurnished
- Private Parking
- Great Location
- Close to all Local Amenities
- Council Tax Band C
- EPC Rating C

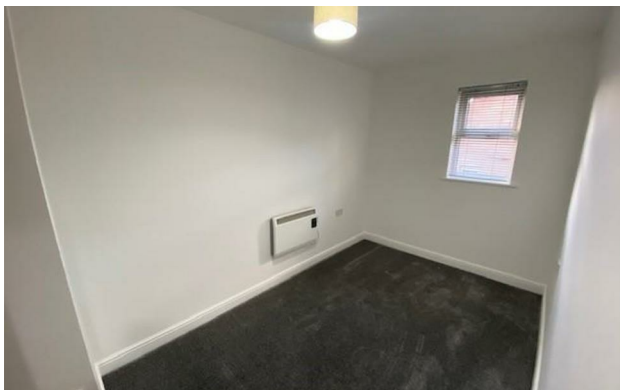
Postcode - M14 7BA

EPC Rating - C

Floor Area - sq ft

Local Authority - Manchester

Council Tax - C





These particulars are believed to be accurate but they are not guaranteed and do not form a contract. Neither Jordan Fishwick nor the vendor or lessor accept any responsibility in respect of these particulars, which are not intended to be statements or representations of fact and any intending purchaser or lessee must satisfy himself by inspection or otherwise as to the correctness of each of the statements contained in these particulars. Any floorplans on this brochure are for illustrative purposes only and are not necessarily to scale.

Offices also at: Wilmslow, Macclesfield, Hale, Sale, Chorlton, Glossop, Manchester & Salford

757-759 Wilmslow Road, Didsbury Village, Manchester

0161 445 4480

didsbury@jordanfishwick.co.uk
www.jordanfishwick.co.uk